

Paper Reference 4MA1/1H
Pearson Edexcel
International GCSE

Mathematics A
Paper 1H
(Calculator)
Higher Tier

Thursday 7 January 2021 – Morning

Diagram Book

**In the boxes below, write your name,
centre number and candidate number.**

Surname										
Other names										
Centre Number										
Candidate Number										

INSTRUCTIONS

There may be spare copies of some diagrams in case you need them.

**THIS DIAGRAM BOOK MUST BE
RETURNED WITH THE QUESTION
PAPER AT THE END OF THE
EXAMINATION.**

Contents

Page

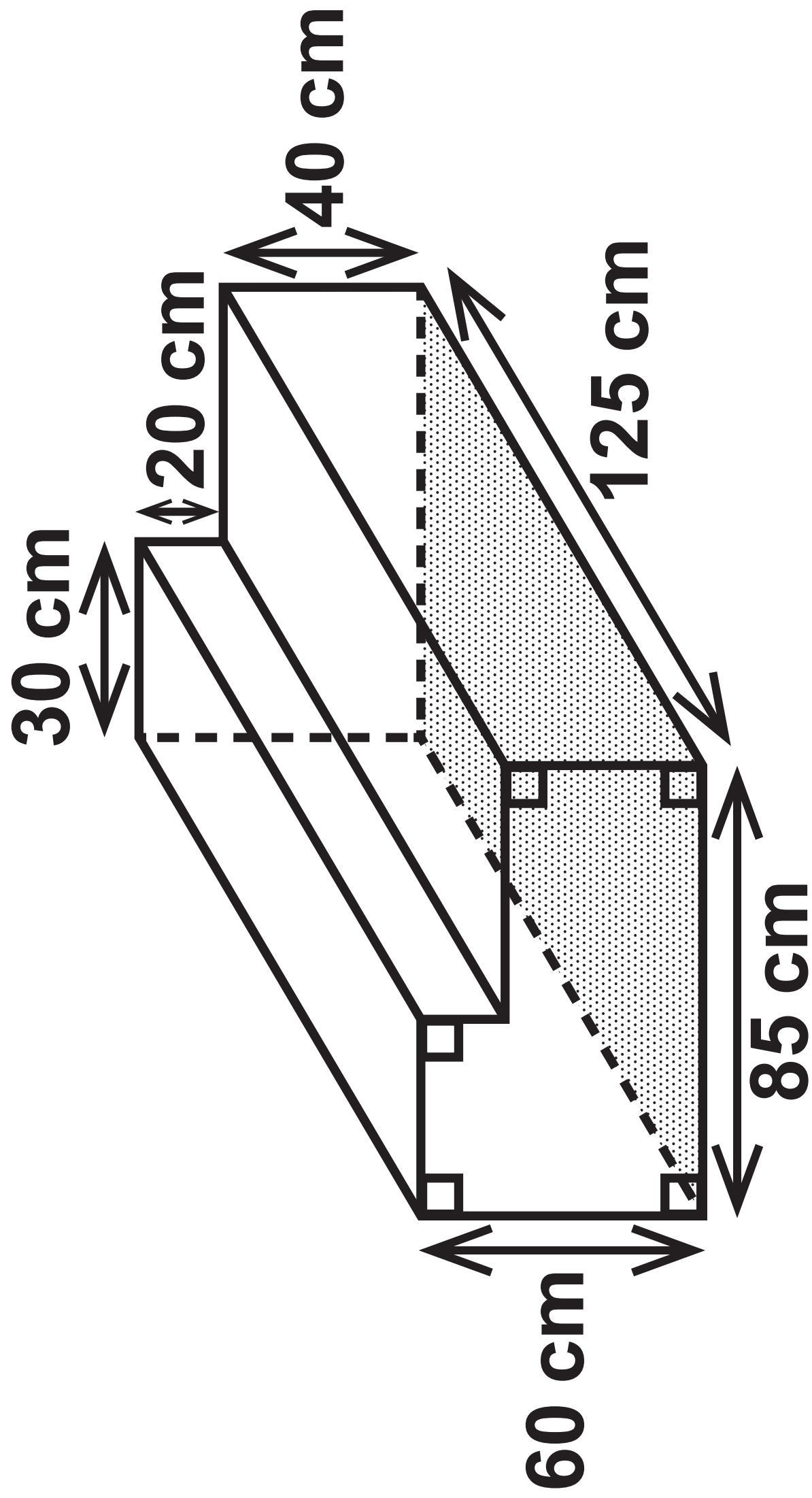
4	Question 2
5	Question 3 – Diagram 1 (NOT accurately drawn)
6	Question 3 – Diagram 2 (NOT accurately drawn)
7	Question 8 (NOT accurately drawn)
8	Question 10 (NOT accurately drawn)
9	Question 11
10	Question 14
11	Question 16 (NOT accurately drawn)
12	Question 17 (NOT accurately drawn)
13	Question 21(b)
14	Question 23 (NOT accurately drawn)
15	Question 23 (Spare copy) (NOT accurately drawn)

Question 2

Speed (s kilometres per hour)	Frequency
$40 < s \leq 50$	10
$50 < s \leq 60$	16
$60 < s \leq 70$	19
$70 < s \leq 80$	23
$80 < s \leq 90$	12

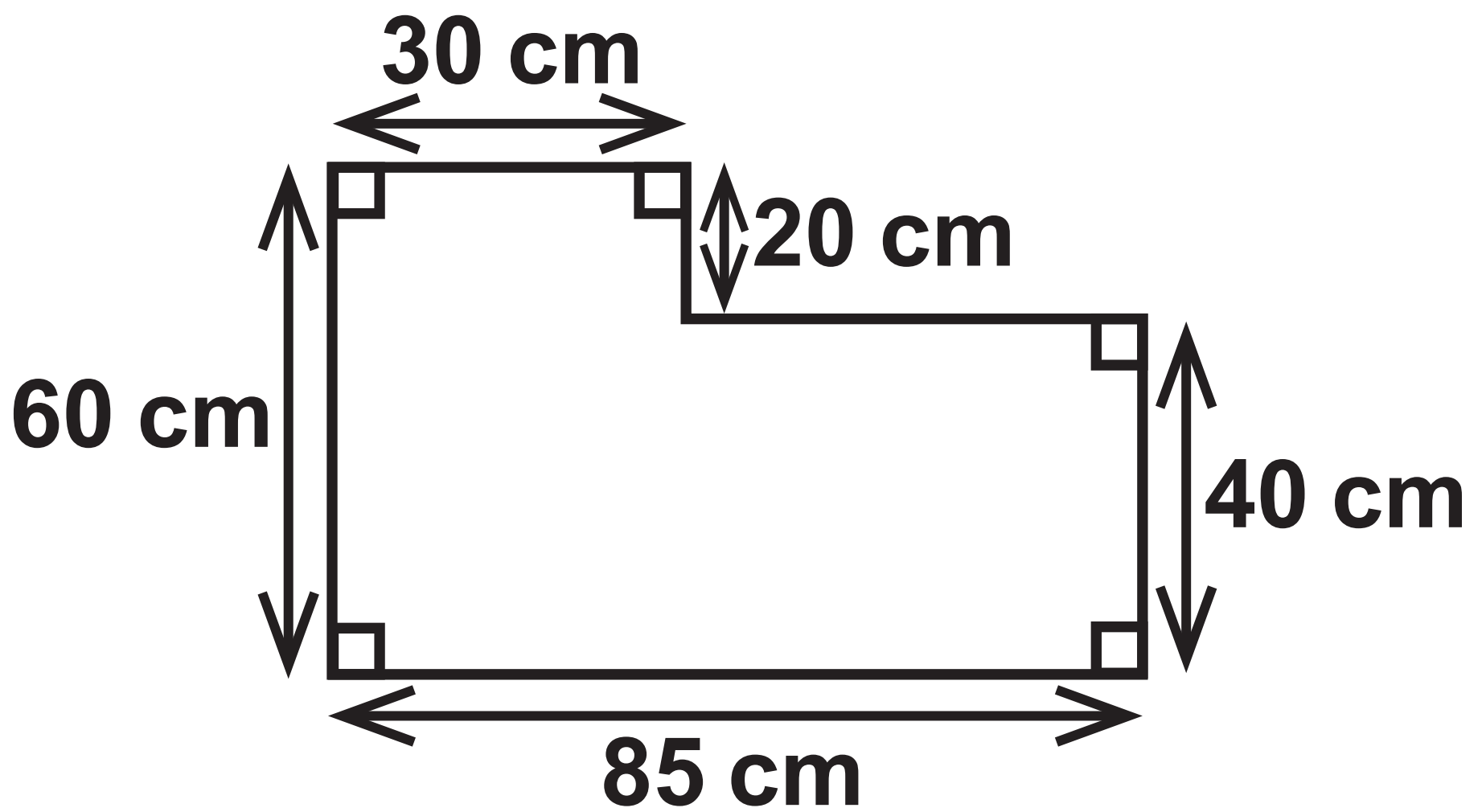
Question 3

Diagram 1

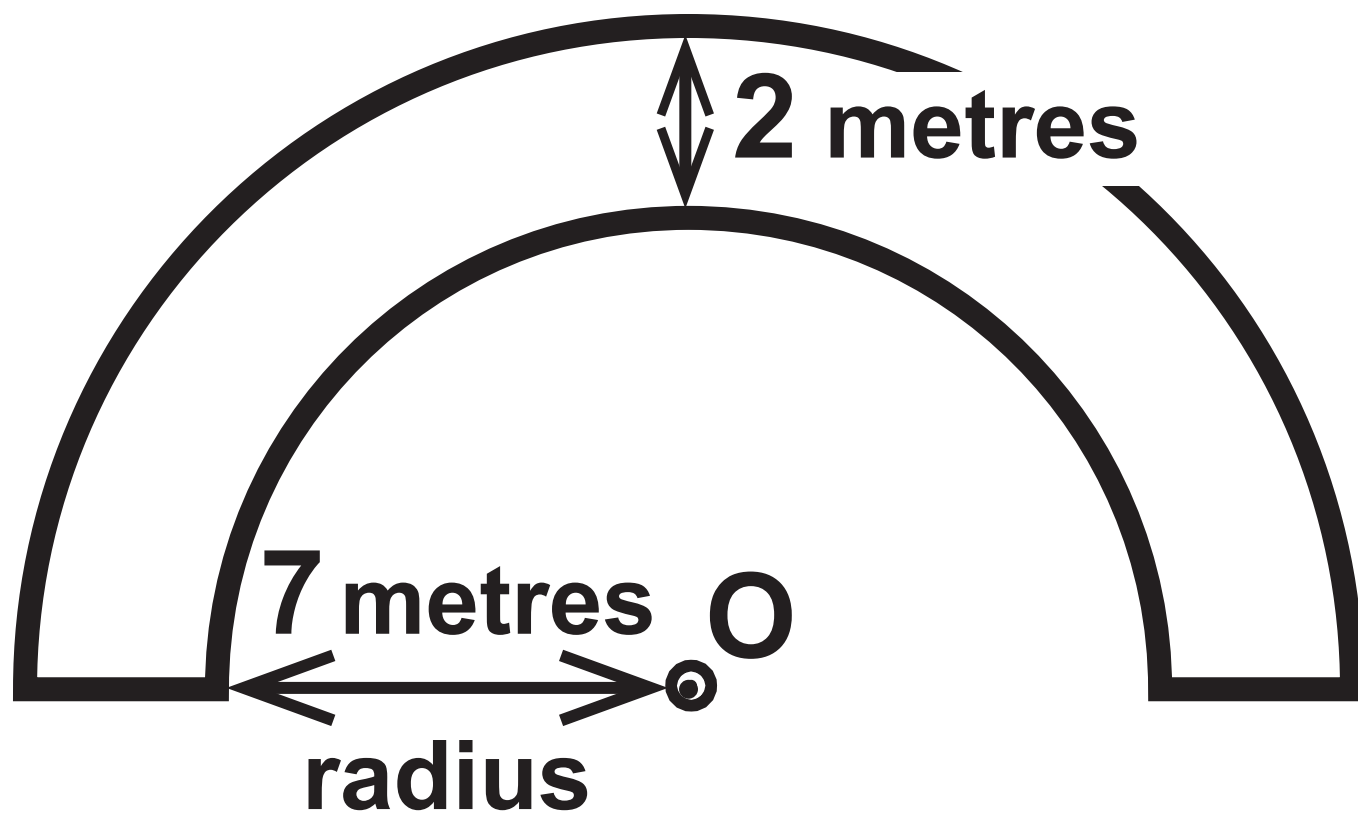


Question 3

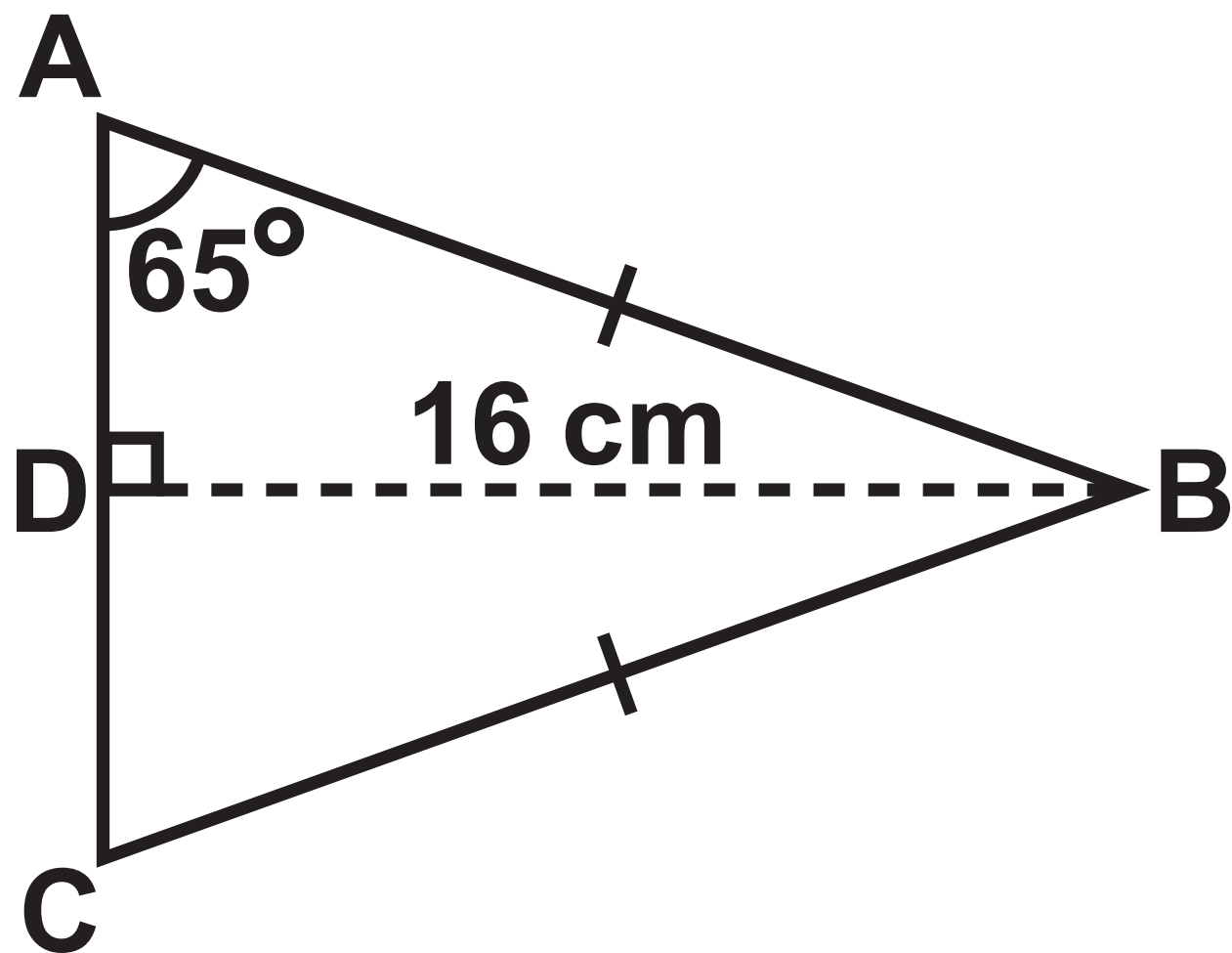
Diagram 2



Question 8

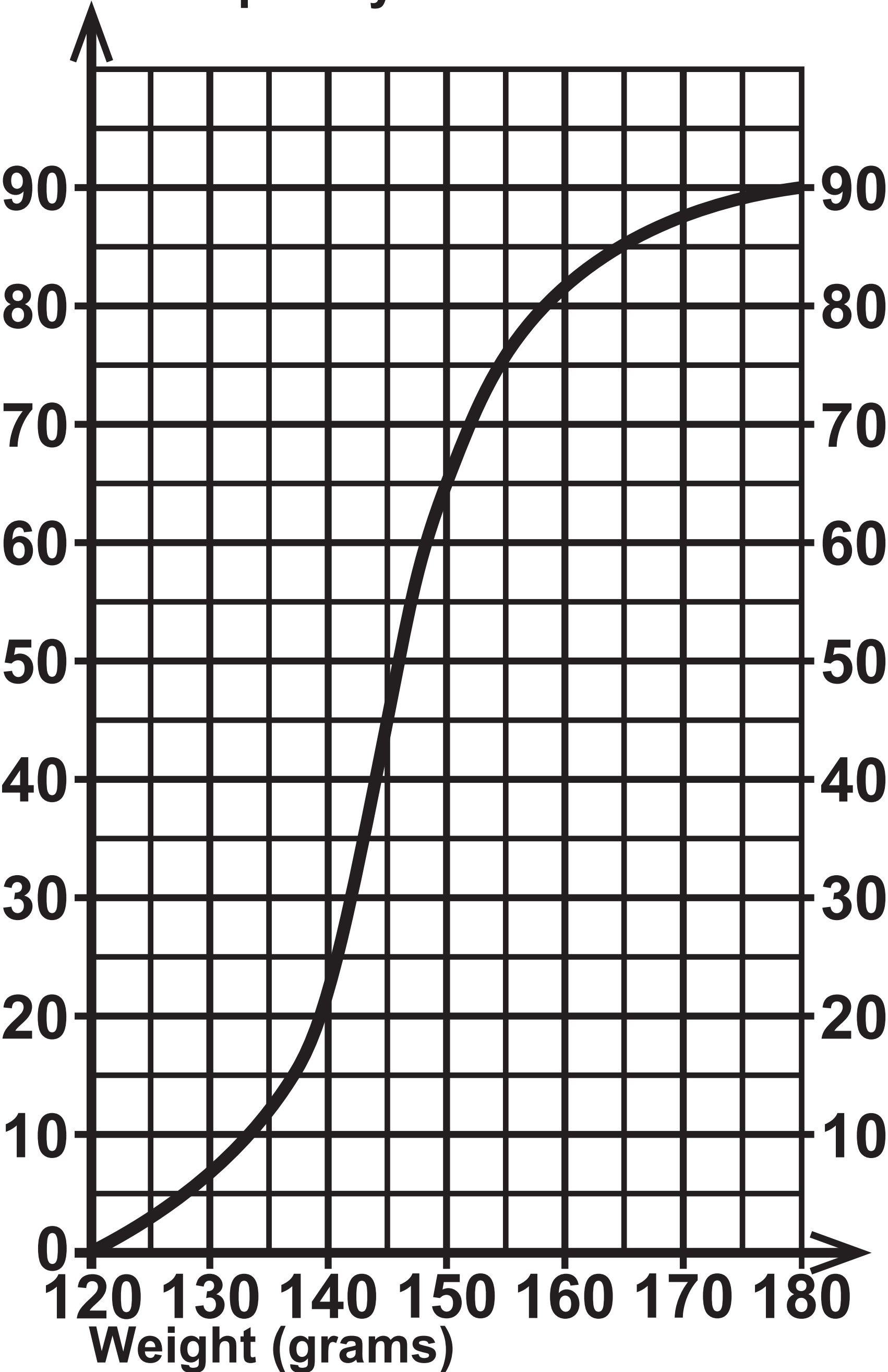


Question 10



Question 11

Cumulative frequency



Question 14

Ding against Marco Ding against Judd

Marco

Judd

0·6
Ding wins

0·4
Ding loses

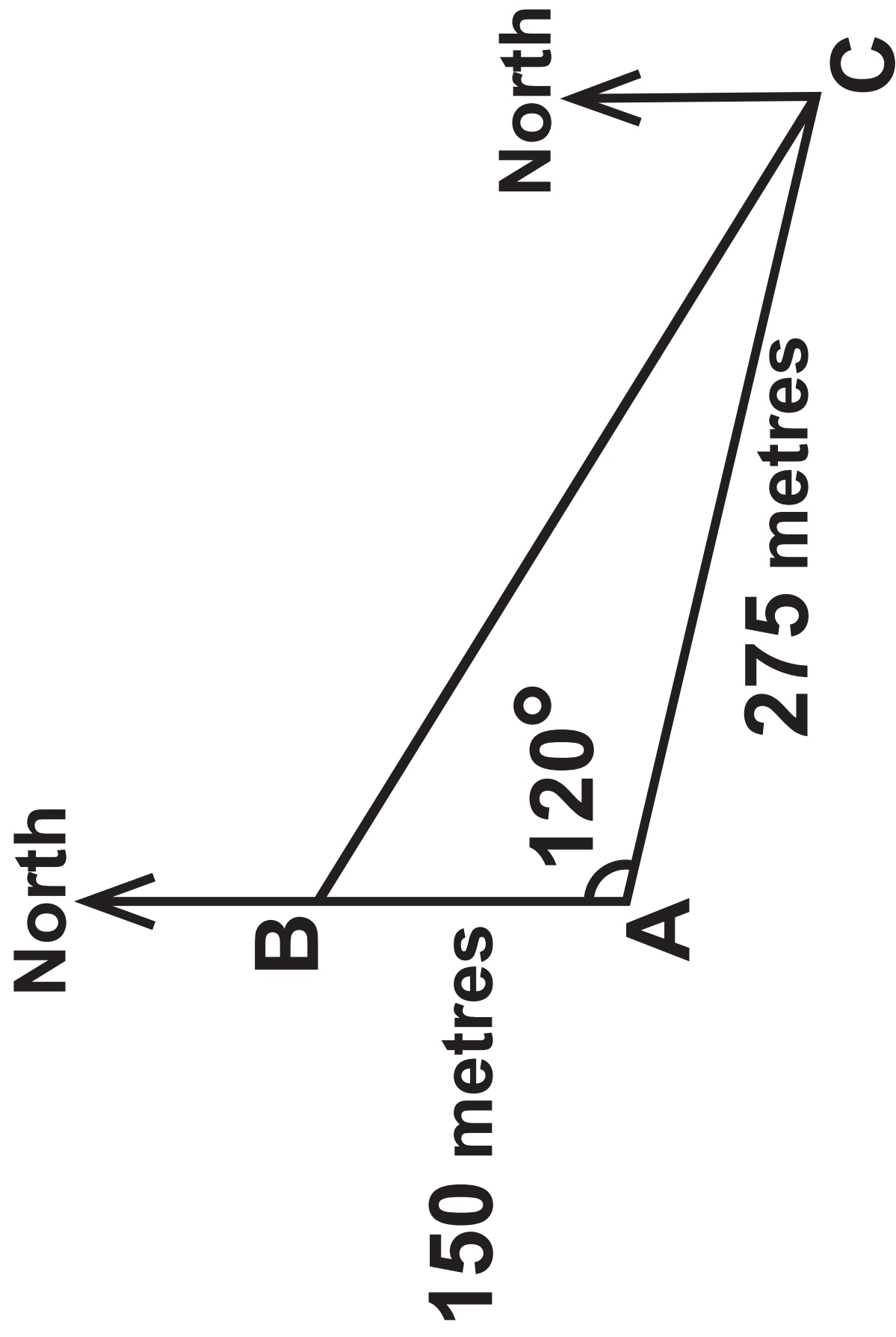
0·9
Ding wins

0·1
Ding loses

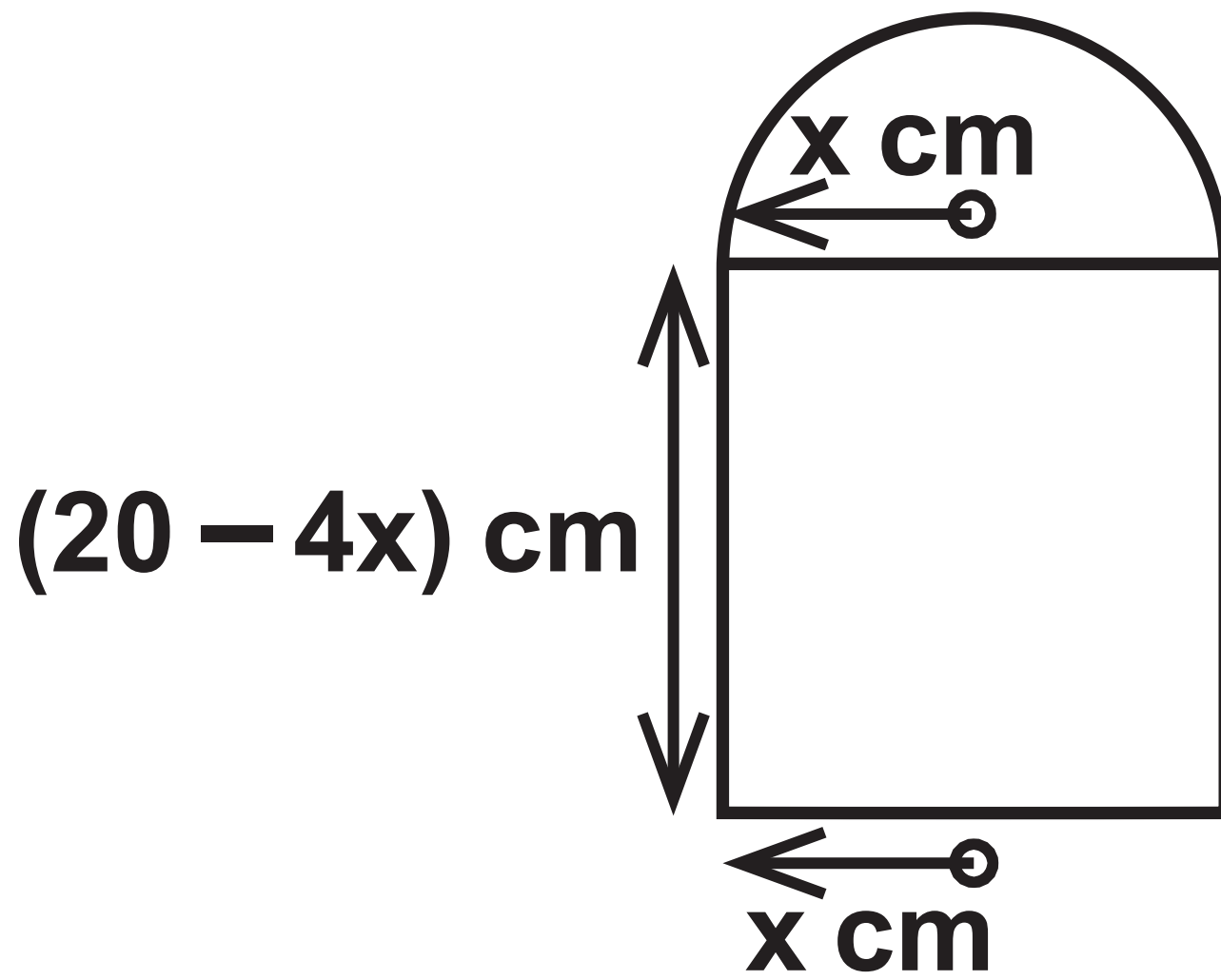
0·25
Ding wins

0·75
Ding loses

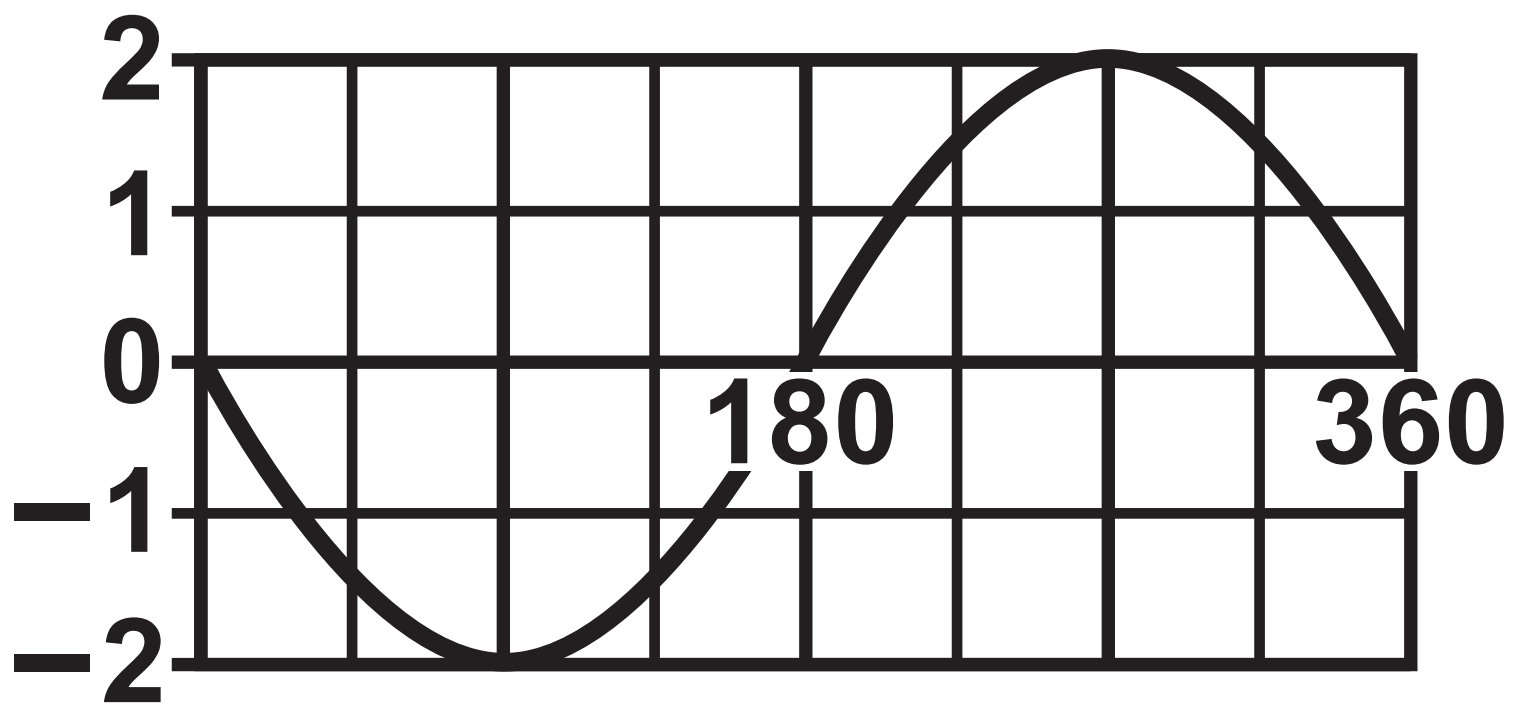
Question 16



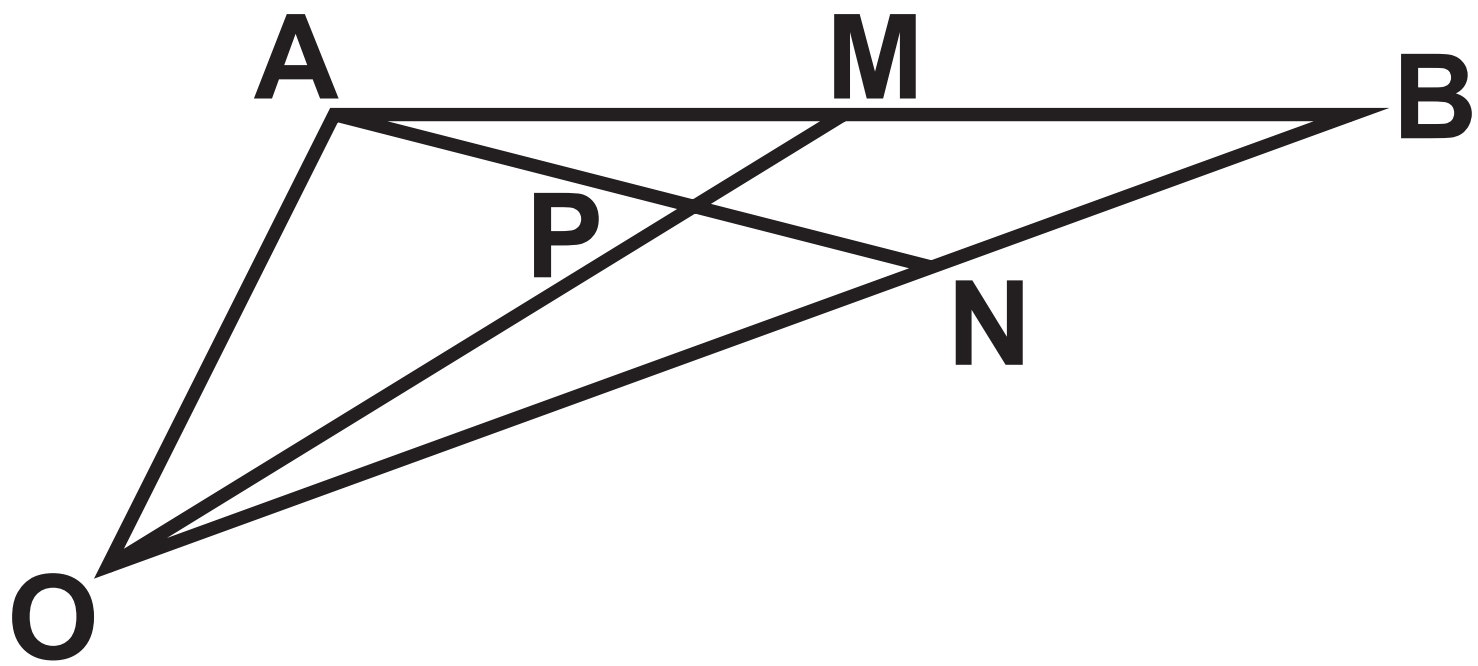
Question 17



Question 21(b)



Question 23



Question 23

